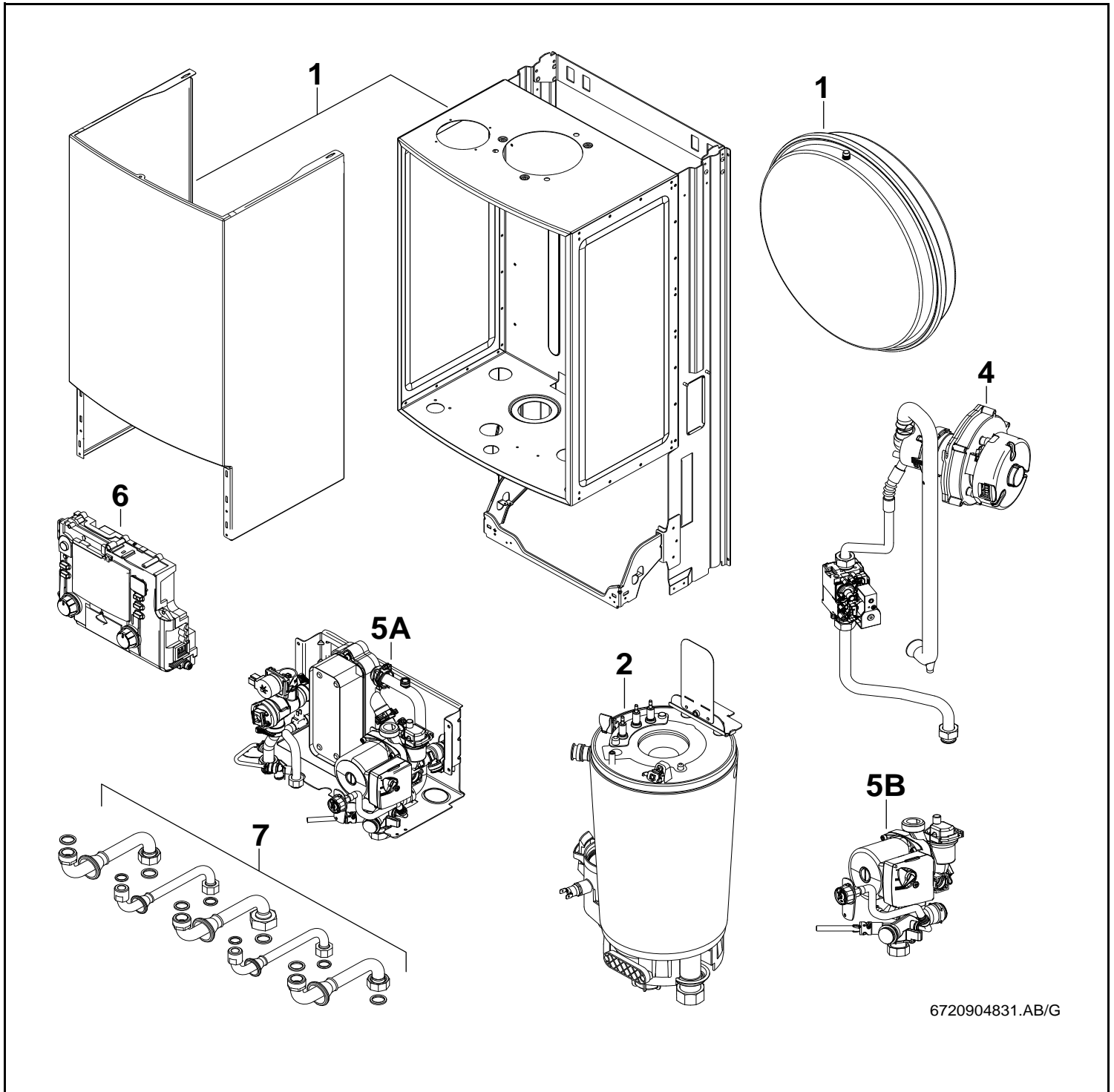


ZSB14/22-3C

ZWB24/28-3C



6720904831.AB/G



Wichtige Hinweise

- Ersatzteile dürfen nur von einem zugelassenen Installateur eingebaut werden!
- Im Anhang finden Sie:
 - die Übersetzungen aller verwendeten Teilebezeichnungen
 - eine Übersicht der Gerätetypen und Länder, für die diese Ersatzteilliste gilt.

Important notes

- The spare parts may only be installed by an approved installer!
- In the appendix you will find:
 - a list of translations of the names of all parts used
 - a list of the models and countries to which this spare parts list applies.

Indications importantes

- L'installation des pièces de rechange doit être effectuée par un professionnel qualifié!
- Veuillez trouver en annexe:
 - les traductions de toutes les désignations des pièces utilisées
 - une vue globale des types de chaudières et des pays pour lesquels la présente liste des pièces de rechange est valable.

Informações importantes

- Peças de substituição só podem ser montadas por um técnico credenciado!
- Em anexo encontra:
 - as traduções das designações de todas as peças utilizadas.
 - lista dos aparelhos e países para os quais esta lista de peças de substituição é válida.

Avvertenze importanti

- Le parti di ricambio possono essere montate esclusivamente da personale qualificato ed in possesso dei requisiti tecnico-professionali!
- In appendice sono reperibili:
 - traduzione di ogni descrizione relativa alle varie parti di ricambio
 - elenco di sigle e codici, corrispondente ai vari paesi di destinazione.

Indicaciones importantes

- Los repuestos solamente deben ser montados por los servicios técnicos oficiales de la marca!
- En el anexo podrá encontrar:
 - la traducción de todas las denominaciones de piezas empleadas
 - una relación de los tipos de aparato y países en los que se aplica esta lista de repuestos.

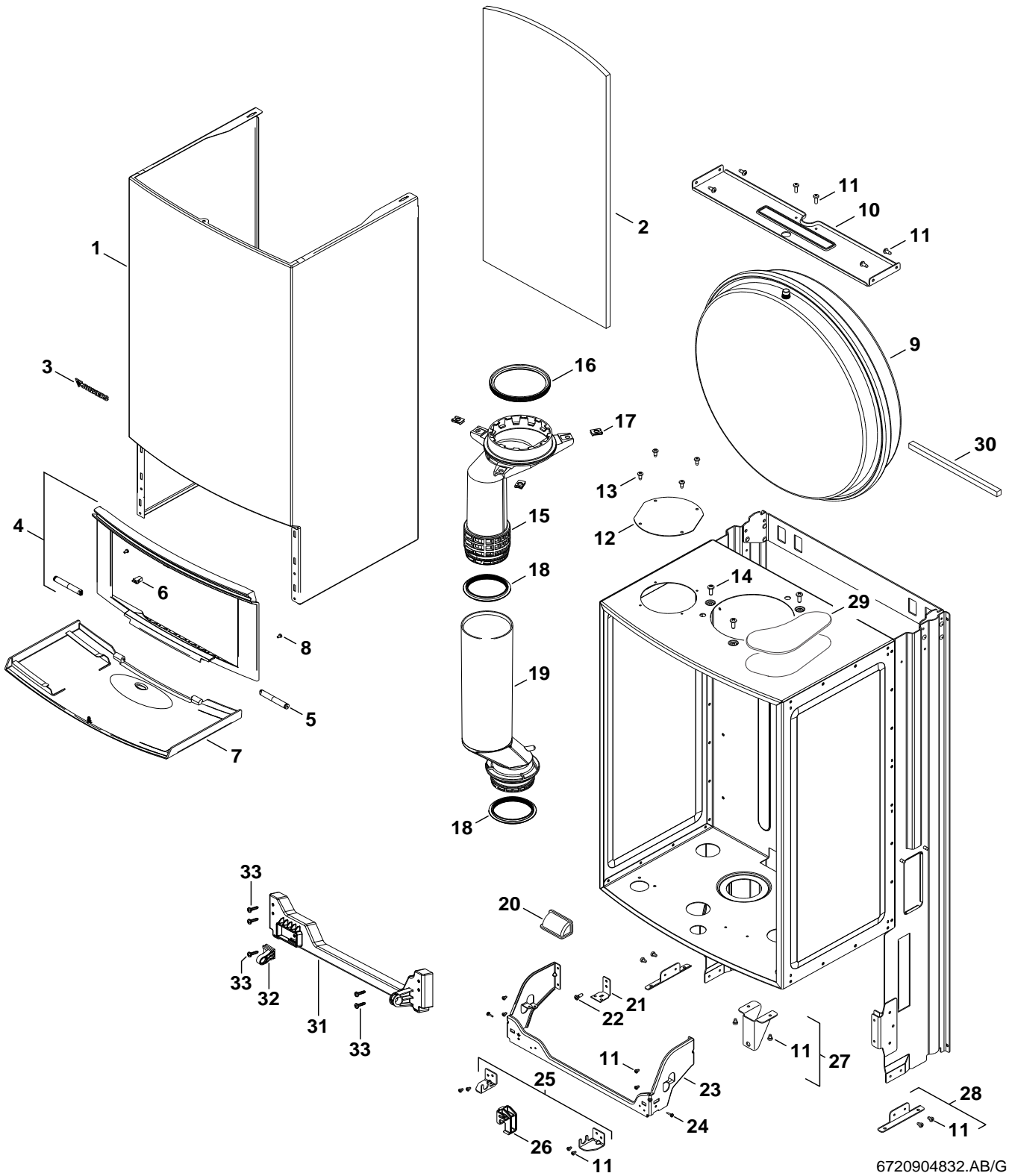
Belangrijke aanwijzing

- Onderdelen mogen alleen door een erkend installateur worden vervangen!
- In de bijlage vindt u:
 - de vertalingen van de gebruikte onderdelentekeningen
 - een overzicht van toesteltypen en de landen waarvoor deze onderdelenlijst bedoeld is.

Önemli Bilgiler

- Yedek parçalar sadece yetkili tesisatçılar tarafından monte edilebilir!
- Aşağıdaki bilgileri ekli olarak bulabilirsiniz:
 - Tüm kullanılan parça tanımlarının tercümelemleri
 - Bu yedek parça listesinin geçerli olduğu tüm cihaz çeşitleri ve ülkelerin özeti.

Spare parts list



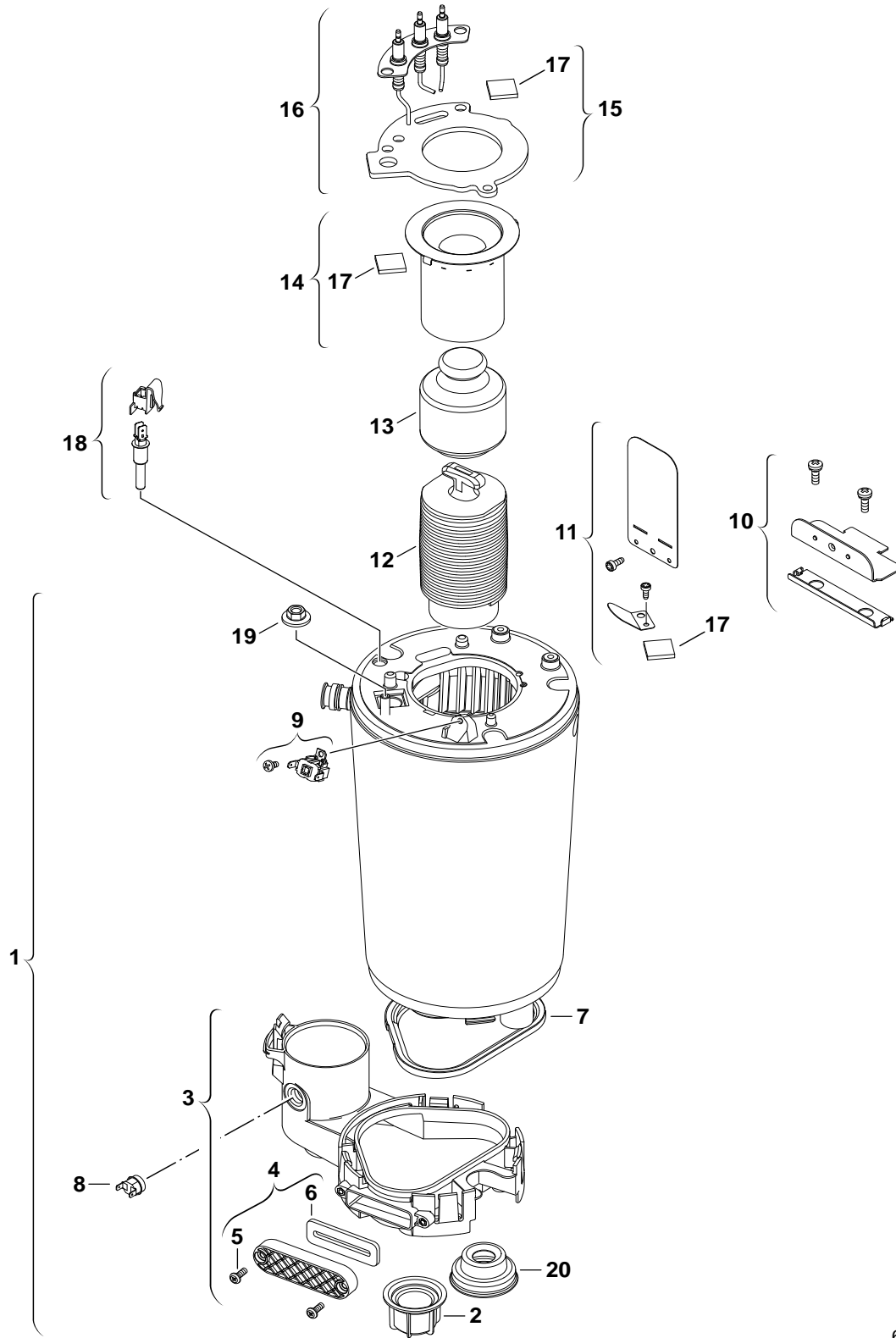
6720904832.AB/G

Sheet metal

1

ZSB14/22-3C
ZWB24/28-3C

Spare parts list



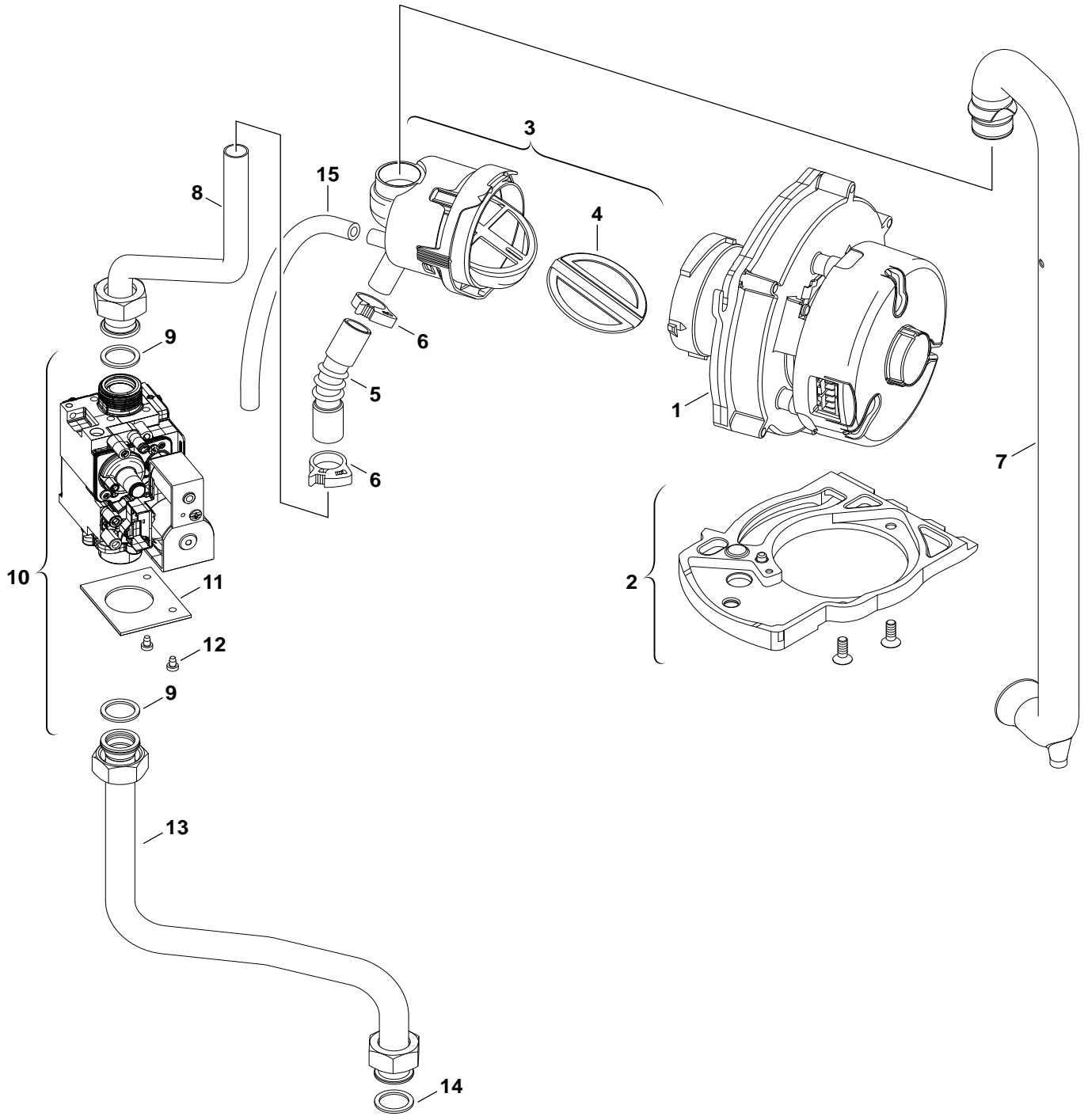
6720904833.AA/G

Burner/Heat exchanger

ZSB14/22-3C
ZWB24/28-3C

2

Spare parts list



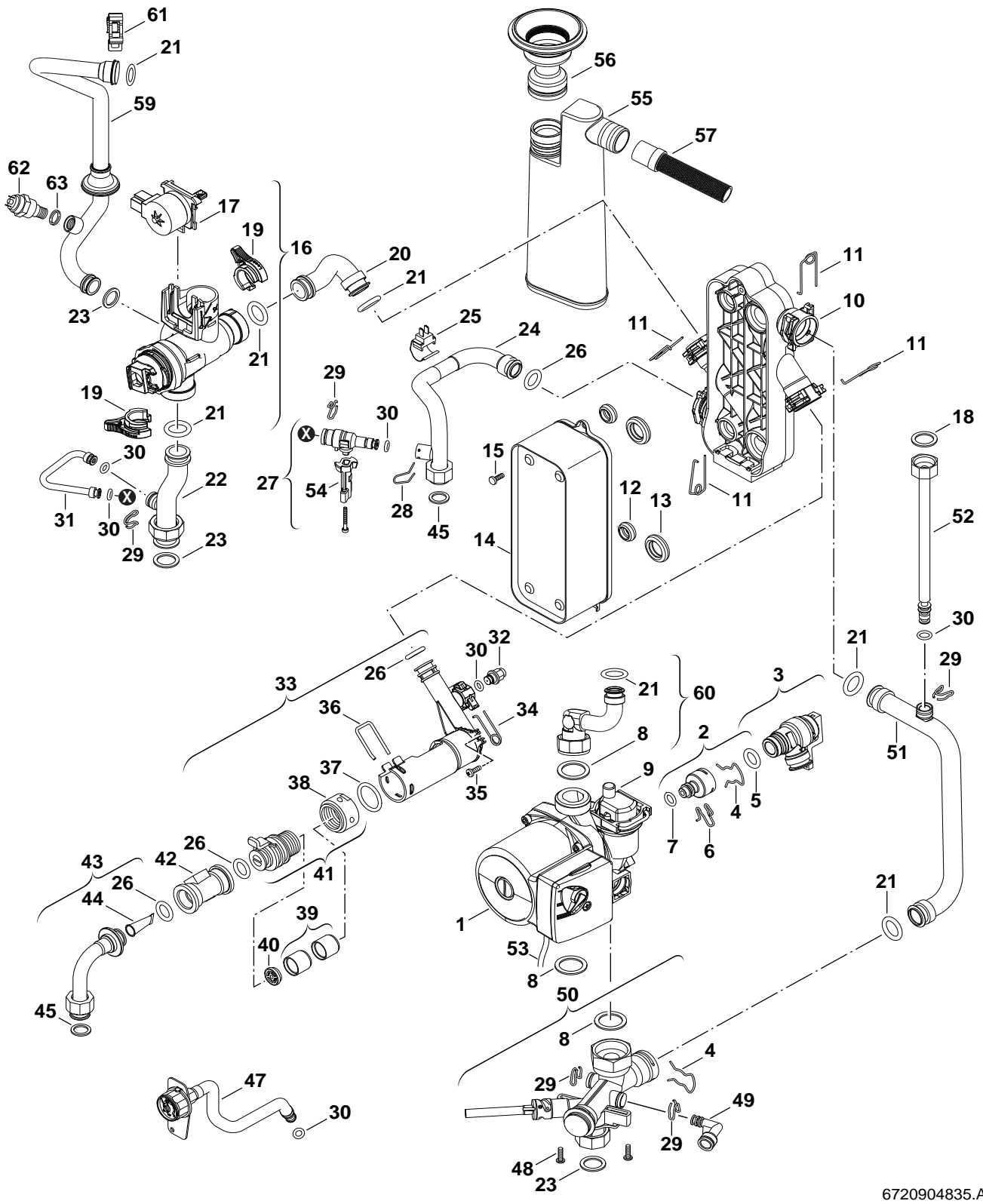
6720904834.AB/G

Gas valve

ZSB14/22-3C
ZWB24/28-3C

4

Spare parts list



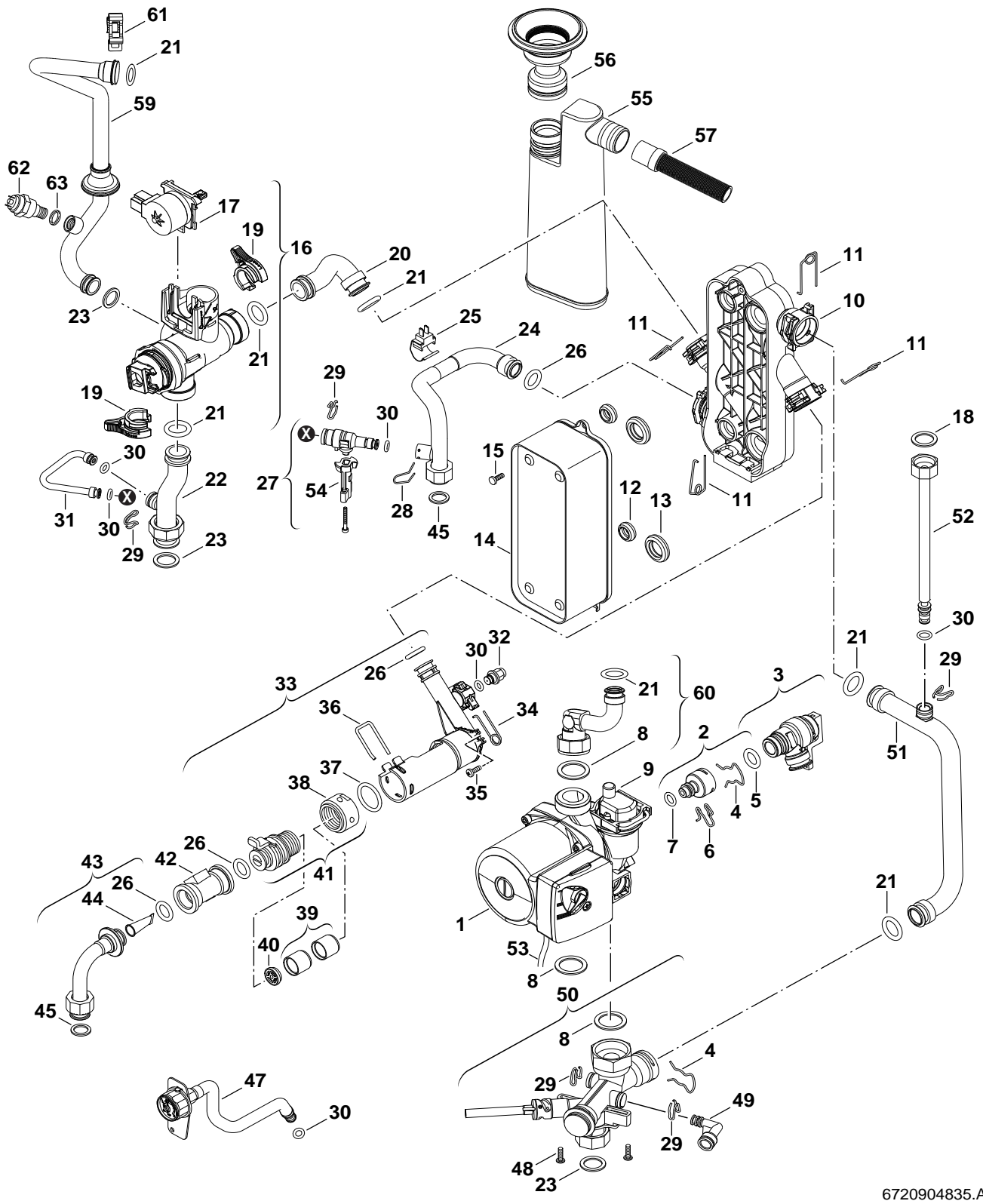
6720904835.AB/G

Pump/Tubes
5
A

ZSB14/22-3C
 ZWB24/28-3C

Pos	Description	S-Nr	Ordering no.	PG	Gas type	ZWB24-3C	ZWB28-3C														Remarks
1	Pump		8 716 011 394 0	49		■	■														
2	Adapter		8 716 010 793 0	22		■	■														
3	Safety relief valve		8 716 010 876 0	25		■	■														
4	Wireform spring		8 711 200 016 0	11		■	■														
5	O-ring		8 716 771 597 0	22		■	■														
6	Wireform spring (10x)		8 714 707 024 0	12		■	■														
7	O-ring (10x)		8 710 205 090 0	12		■	■														
8	Washer		8 710 103 164 0	17		■	■														
9	Automatic purger		8 718 505 039 0	29		■	■														
10	Lower housing		8 716 011 819 0	35		■	■														
11	Retaining spring 18mm (10x)		8 716 771 169 0	12		■	■														
12	Gasket (x10)		8 716 771 325 0	19		■	■														
13	Washer (10x)		8 716 771 003 0	19		■	■														
14	Heat exchanger		8 716 771 987 0	45		■	■														
15	Screw & washer assembly M5x30		8 716 106 452 0	14		■	■														
16	3-way valve		8 716 010 801 0	42		■	■														<=FD012
16	Valve 3-way SAIA W/O BYPASS		8 718 642 211 0	37		■	■														>=FD101
17	Motor		8 716 011 360 0	43		■	■														<=FD012
17	Motor		8 718 642 957 0	36		■	■														>=FD101
18	Washer (10X)		8 710 103 121 0	18		■	■														
19	Clip (3x)		8 716 010 800 0	16		■	■														
20	Pipe		8 716 010 798 0	27		■	■														<=FD012
20	Pipe PHE inlet SAIA		8 718 642 059 0	21		■	■														>=FD101
21	O-ring 17x4 (10x)		8 716 771 154 0	12		■	■														
22	Pipe	5200,7300	8 716 010 802 0	26		■	■														<=FD012
22	Flow pipe	6100	8 716 011 096 0	24			■														<=FD012
22	Pipe CH out SAIA w adaptor	5200,7300	8 718 642 061 0	25		■	■														>=FD101
22	Flow pipe CH out SAIA w/o adaptor	6100	8 718 642 193 0	22			■														>=FD101
23	Sealing washer 23.9 X 17.2 X 1.5 (10x)		8 710 103 043 0	12		■	■														
24	Flow pipe	5200,7300	8 716 010 797 0	26		■	■														<=FD012
24	Pipe	6100	8 716 010 871 0	25			■														
24	Flow pipe SAIA	5200,7300	8 718 642 401 0	25		■	■														>=FD101
25	Temperature sensor		8 716 010 809 0	21		■	■														
26	O-ring 13,87x3,53 (10x)		8 716 771 155 0	22		■	■														
27	Filling loop	5200,7300	8 716 010 318 0	36		■	■														
28	Wireform spring		8 716 148 354 0	12		■	■														
29	Clip (10x)		8 719 905 335 0	28		■	■														
30	O-ring 6x2,5 (10x)		8 716 771 164 0	12		■	■														
31	Filling loop	5200,7300	8 716 010 805 0	21		■	■														
32	Blow off valve (l) 15bar		8 717 401 016 0	13		■	■														
33	Turbine case		8 716 011 820 0	31		■	■														
34	Retaining spring 10mm (10x)		8 716 771 167 0	12		■	■														
35	Screw m4 x 12mm tapite zc pl ph		2 914 411 404 0	02		■	■														
36	Clamp		8 716 106 488 0	10		■	■														
37	O-ring 22x3 EPDM (10x)		8 716 106 747 0	15		■	■														
38	Adapter		8 716 111 797 0	14		■	■														
39	Silencer		8 716 011 756 0	16		■	■														
40	Flow limite 15L		8 716 011 806 0	18		■	■														
40	Flow limiter insert 14lt		8 716 107 887 0	16		■	■														
40	Flow limiter insert 10lt		8 716 141 057 0	18		■	■														
40	Flow regulator type E-W 12 l/min red		8 716 141 061 0	18		■	■														
41	Flow sensor adaptor		8 716 112 491 0	18		■	■														
ZSB14/22-3C																	Pump/Tubes				5A
ZWB24/28-3C																					

Spare parts list

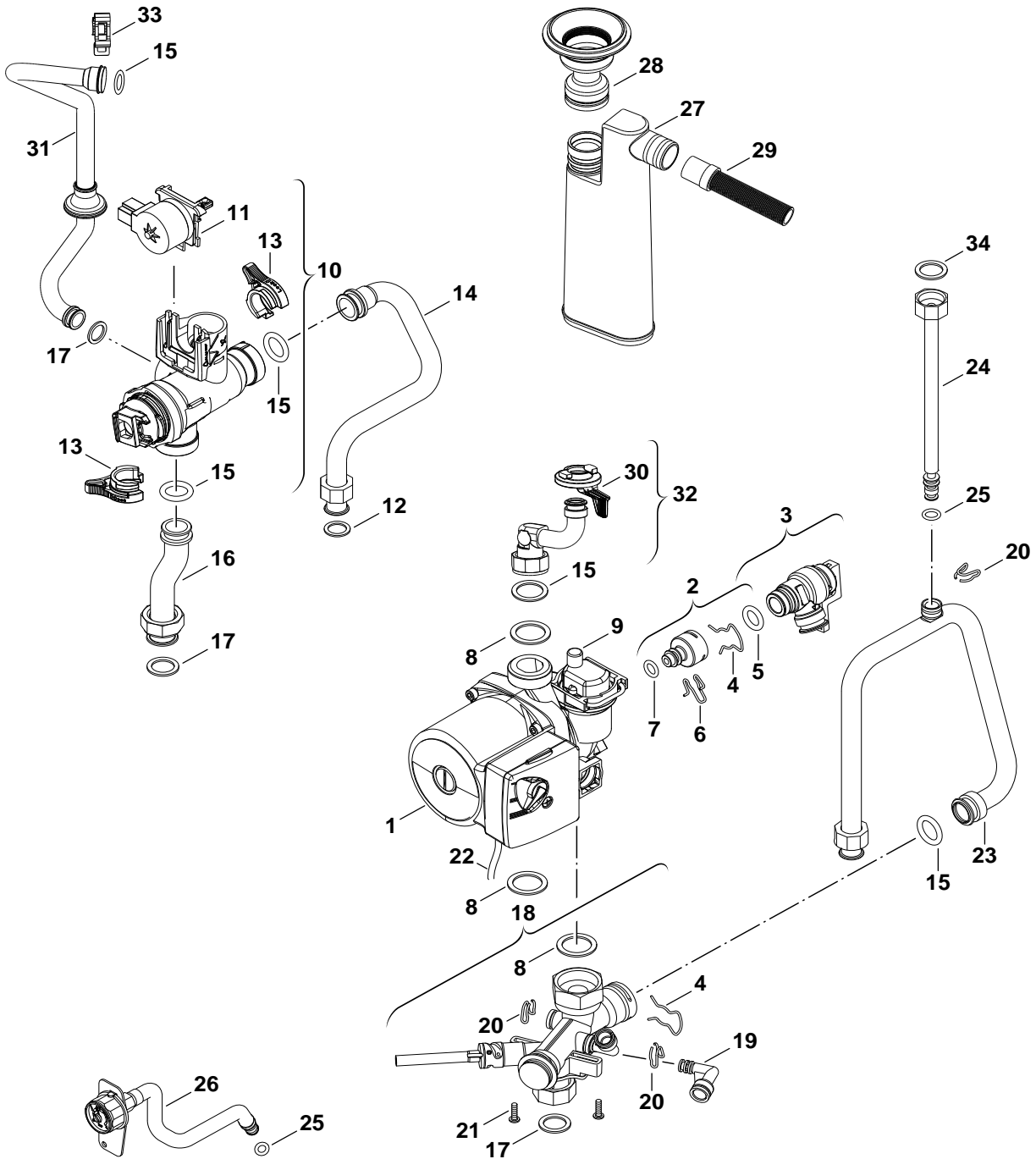


6720904835.AB/G

Pump/Tubes
5
A

ZSB14/22-3C
 ZWB24/28-3C

Spare parts list



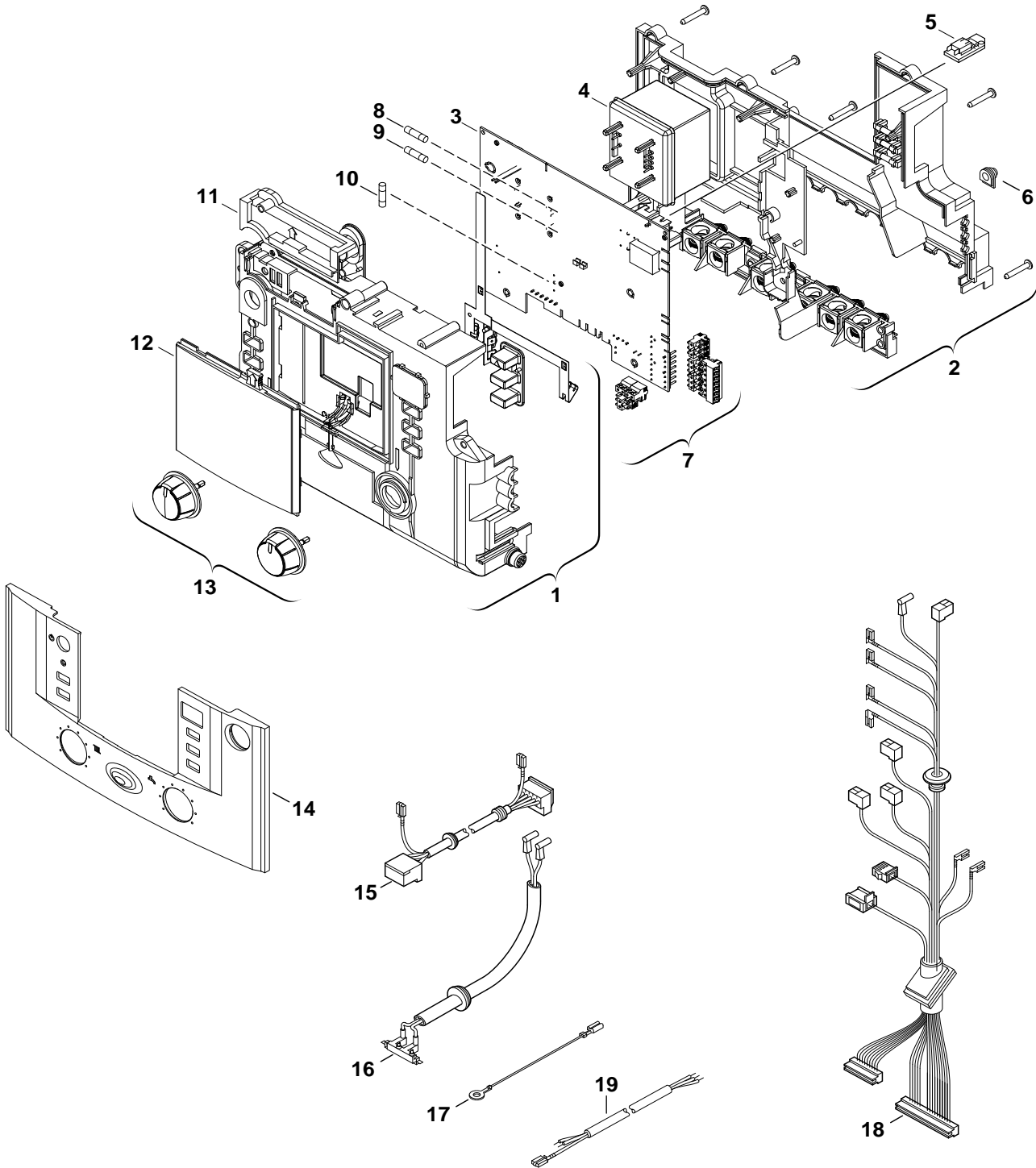
6720904874.AA/G

Pump/Tubes

5
B

ZSB14/22-3C
ZWB24/28-3C

Spare parts list



6720904836.AA/G

Control box

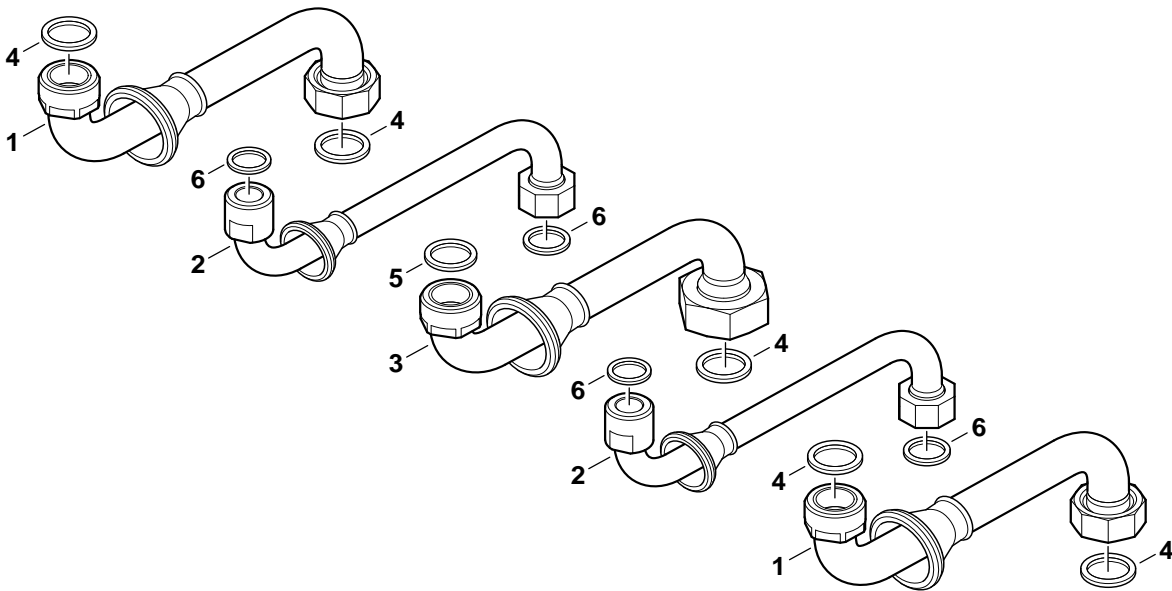
6

ZSB14/22-3C
ZWB24/28-3C

Pos	Description	S-Nr	Ordering no.	PG	Gas type	ZSB14-3C	ZSB22-3C	ZWB24-3C	ZWB28-3C													Remarks
1	Upper housing		8 717 207 678 0	35		■	■	■	■													
2	Backpanel		8 717 207 679 0	35		■	■	■	■													
3	circuit board	5200,7300	8 748 300 673 0	51		■	■	■	■													
3	circuit board	6100	8 748 300 674 0	51		■	■	■	■													
4	Transformer	5200,7300	8 717 201 052 0	29		■	■	■	■													
4	Transformer (Ioni-PCB)	6100	8 747 201 342 0	38		■	■	■	■													
5	Code Plug 1150		8 714 431 150 0	15	NG (21,23)	■																
5	Code Plug 1151	5200,7300	8 714 431 151 0	15	LPG (3B/P)	■																
5	Code Plug 1152		8 714 431 152 0	15	NG (21,23)		■															
5	Code Plug 1153	5200,7300	8 714 431 153 0	15	LPG (3B/P)		■															
5	Code Plug 1154	7300	8 714 431 154 0	15	NG (21,23)			■														
5	Code Plug 1155	7300	8 714 431 155 0	15	LPG (3B/P)			■														
5	Code Plug 1156	5200,6100	8 714 431 156 0	15	NG (21,23)				■													
5	Code Plug 1157	5200	8 714 431 157 0	15	LPG (3B/P)				■													
5	Code Plug 1158	6100	8 714 431 158 0	15	LPG (3P)				■													
5	Code Plug 1159	6100	8 714 431 159 0	15	LPG (3P)		■															
5	Code Plug 1160	6100	8 714 431 160 0	15	LPG (3P)	■																
6	Grommet (10x)		8 710 506 185 0	16		■	■	■	■													
7	Set of connectors		8 714 404 348 0	26		■	■	■	■													
8	Fusing element T1,6A		1 904 522 740 0	15		■	■	■	■													
9	Fusing element T0,5A		1 904 522 730 0	15		■	■	■	■													
10	Fusing element T2,5A (10x)		1 904 521 342 0	20		■	■	■	■													
11	Cover		8 717 207 680 0	16		■	■	■	■													
12	Cover		8 711 000 302 0	18		■	■	■	■													
13	Rotary handle		8 712 000 129 0	20		■	■	■	■													
14	Cover		8 718 640 027 0	35		■	■	■	■													
15	Centrifugal blower cables		8 714 411 331 0	25		■	■	■	■													
16	Ignition harness		8 716 106 799 0	29		■	■	■	■													
17	Cable		8 716 011 051 0	14		■	■	■	■													
18	Cable tree		8 716 012 268 0	33				■	■													
18	Cable tree		8 716 012 295 0	32		■	■															
19	Power supply cord	6100	8 704 401 032 0	22		■	■		■													
19	Cable	5200,7300	8 719 905 576 0	20		■	■	■	■													
	Gas conversion kit 23>31	6100	8 716 012 759 0	19		■																
	Gas conversion kit 23>31	6100	8 716 012 760 0	19			■															
	Gas conversion kit 23>31	6100	8 716 012 762 0	19					■													
	Gas conversion kit NG>LPG(3P)	5200,7300	8 716 013 114 0	19		■																
	Gas conversion kit NG>LPG(3P)	5200,7300	8 716 013 115 0	19			■															
	Gas conversion kit NG>LPG(3P)	5200,7300	8 716 013 116 0	19				■	■													

ZSB14/22-3C ZWB24/28-3C																		Control box				6
--	--	--	--	--	--	--	--	--	--	--	--	--	--	--	--	--	--	-------------	--	--	--	----------

Spare parts list



6720904968.AA/G

Mounting plate

7

ZSB14/22-3C
ZWB24/28-3C

Pos	Description	S-Nr	Ordering no.	PG	Gas type	ZSB14-3C	ZSB22-3C	ZWB28-3C											Remarks								
1	Pipe	6100	8 718 640 151 0	26	23	■	■	■																			
2	Pipe	6100	8 718 640 149 0	24	23	■	■	■																			
3	Pipe	6100	8 718 640 150 0	27	23	■	■	■																			
4	Sealing washer 23.9 X 17.2 X 1.5 (10x)		8 710 103 043 0	12		■	■	■																			
5	Washer		8 710 103 164 0	17		■	■	■																			
6	Washer 18.6 X 13.5 X 1.5 (10x)		8 710 103 045 0	11		■	■	■																			
ZSB14/22-3C ZWB24/28-3C									Mounting plate										7								

Types of appliances

Appliance	Ordering no.	Country	Remarks
ZSB14-3C23S5200	7 716 010 276	Czech Republic	
ZSB22-3C23S5200	7 716 010 275	Czech Republic	
ZWB28-3C23S5200	7 716 010 274	Czech Republic	
ZSB14-3C23S6100	7 716 010 273	Estonia,Latvia,Lithuania	
ZSB22-3C23S6100	7 716 010 272	Estonia,Latvia,Lithuania	
ZWB28-3C23S6100	7 716 010 271	Estonia,Latvia,Lithuania	
ZSB14-3C23S7300	7 716 010 278	Slovakia	
ZSB22-3C23S7300	7 736 900 088	Slovakia	
ZWB24-3C23S7300	7 716 010 277	Slovakia	



Bosch Thermotechnik GmbH
Sophienstraße 30-32
D-35576 Wetzlar
www.junkers.com